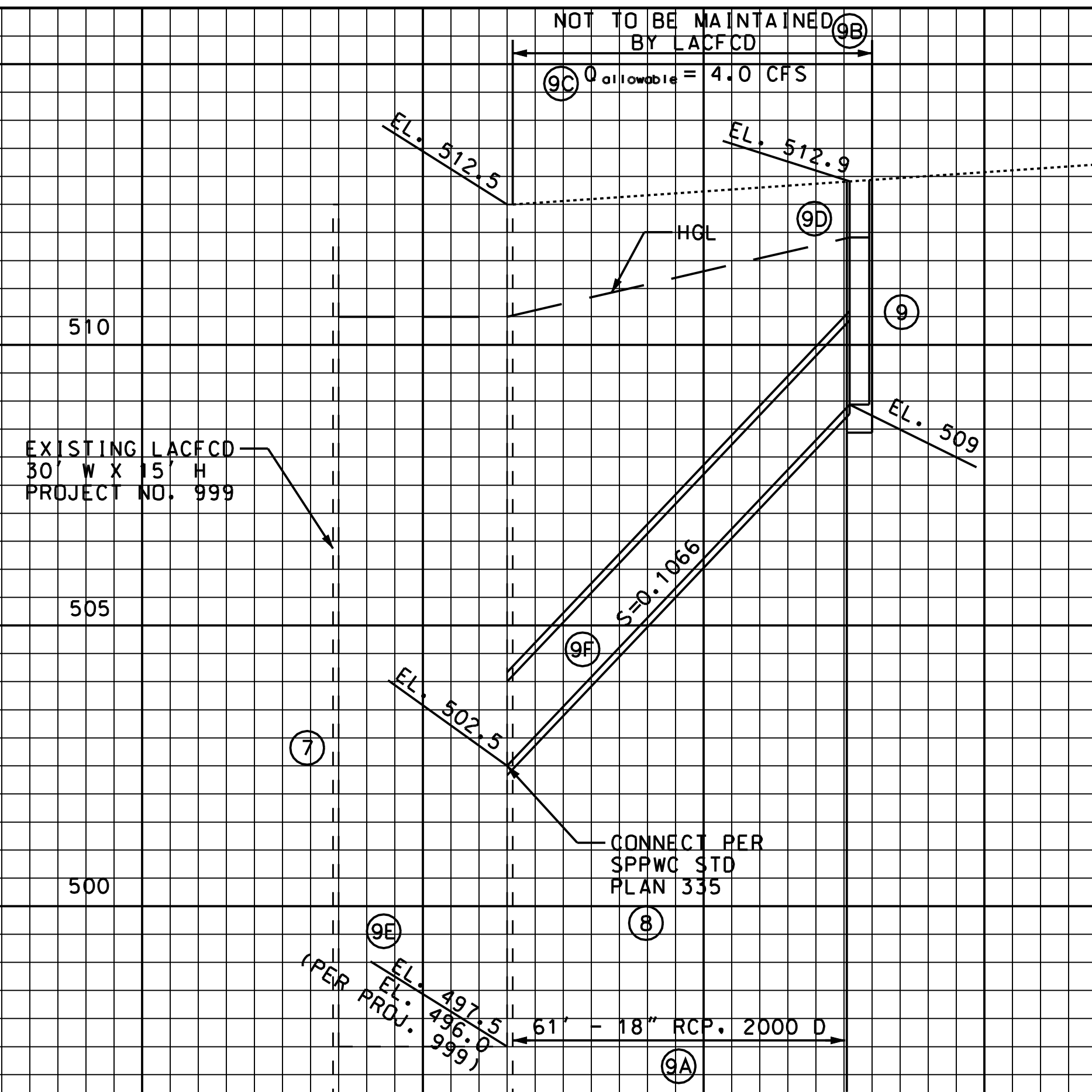


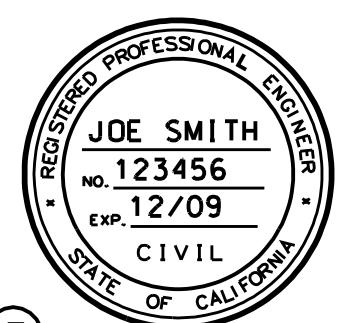
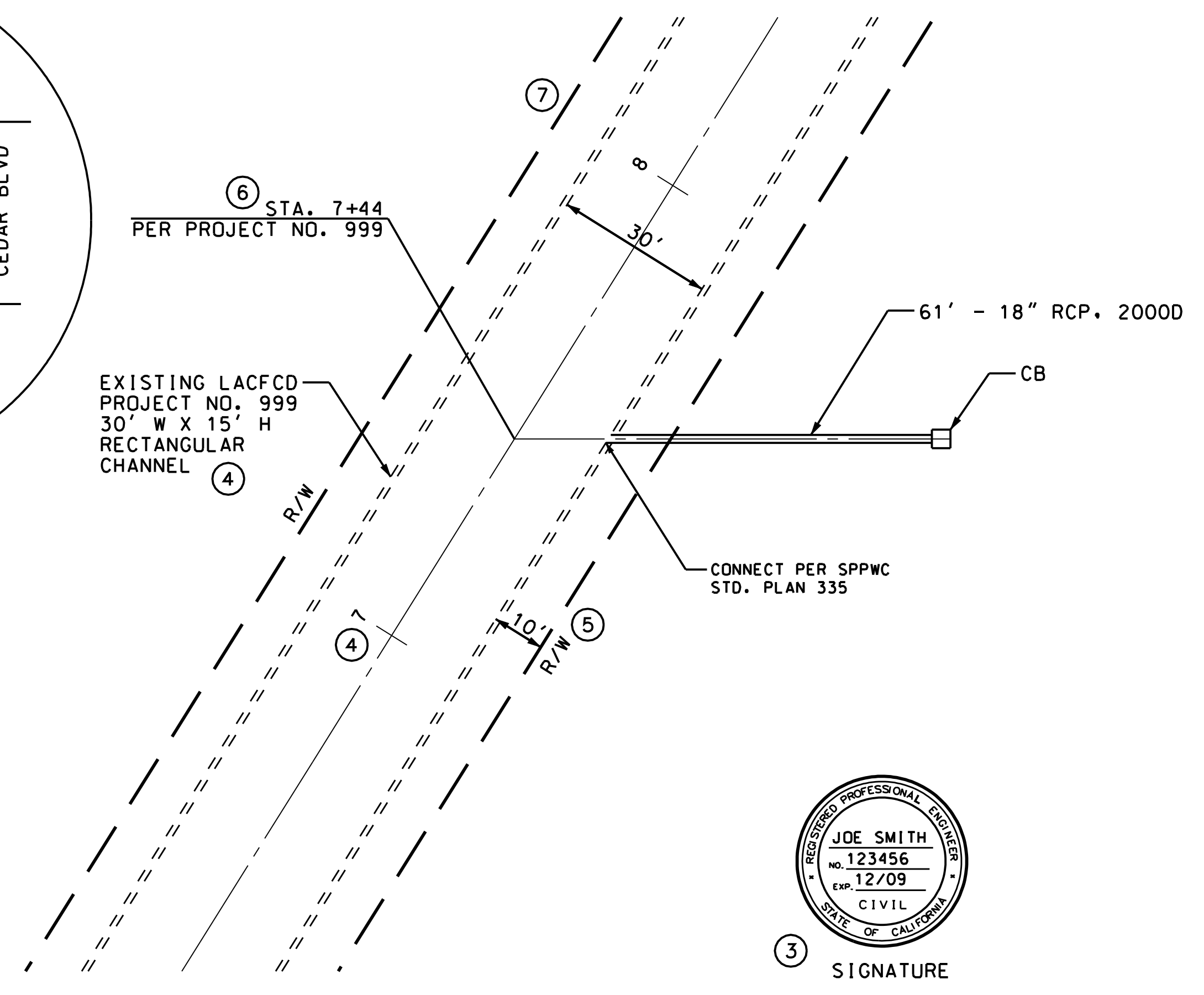
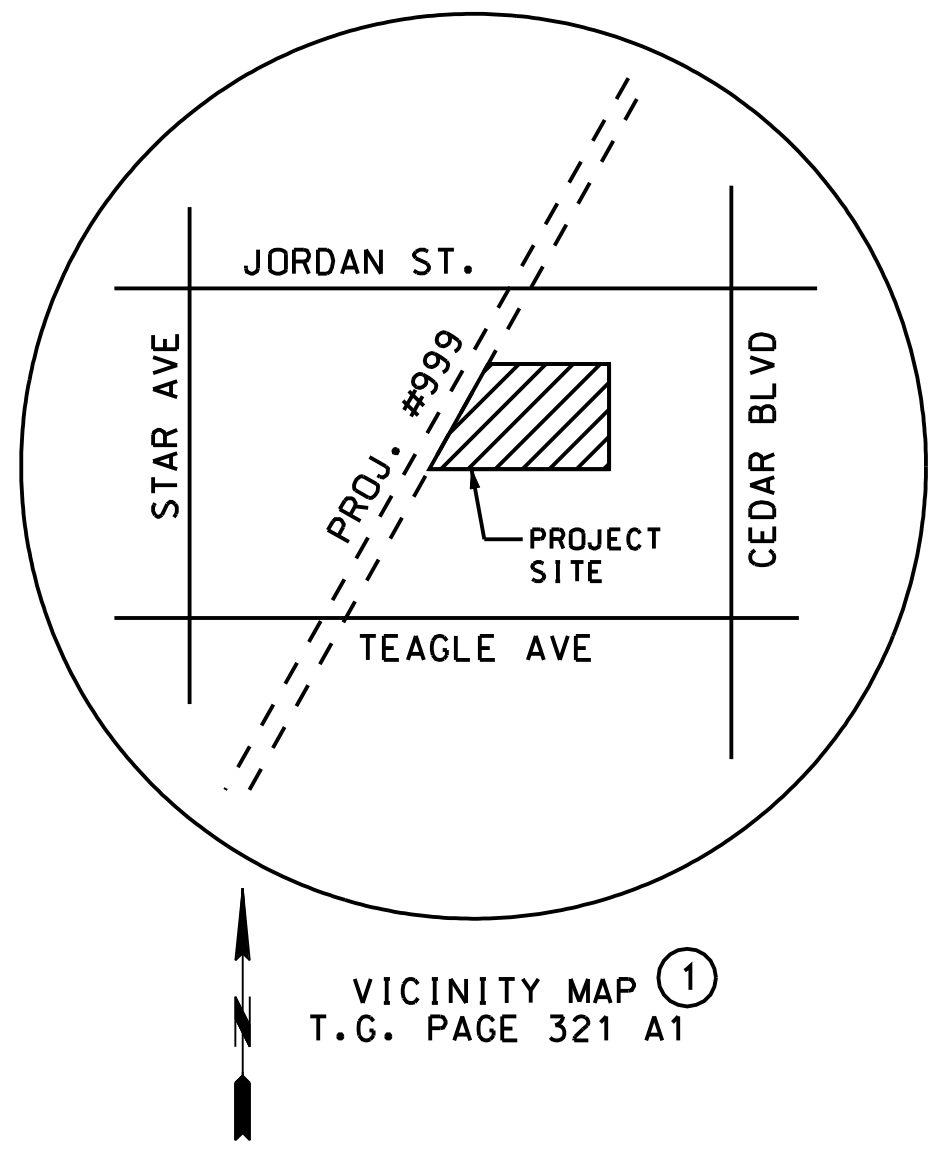
SCALE: HOR. 1" = 20'
VERT. 1" = 2'



- ⑩ B. WHERE REINFORCEMENT IS REQUIRED TO EXTEND THROUGH THE NEW JOINT, CONCRETE SHALL BE REMOVED IN THE FOLLOWING SEQUENCE.
1. A SAW CUT SHALL BE MADE ONE AND ONE-HALF INCHES DEEP AT THE REMOVAL LIMITS. CARE SHALL BE EXERCISED IN SAWING AT THE REMOVAL LIMITS SO AS NOT TO CUT THE REINFORCING STEEL IN THE REMAINING SLAB. THE EXISTING REINFORCING STEEL SHALL BE RETAINED AND EXTENDED INTO THE NEW CONSTRUCTION AS INDICATED ON THE PLANS.
 2. EXISTING REINFORCEMENT SHALL BE CUT TO THE REQUIRED BAR EXTENSION.
 3. THE REMAINING CONCRETE MAY BE REMOVED BY ANY SUITABLE METHOD UPON APPROVAL OF THE ENGINEER, WHO SHALL BE THE SOLE JUDGE OF THE USE OF ANY CONCRETE REMOVAL EQUIPMENT, EXPLOSIVES, WRECKING BALL, OR OTHER SIMILAR DEVICES, WHICH ARE LIKELY TO DAMAGE THE CONCRETE TO BE LEFT IN PLACE, SHALL NOT BE USED.

PLAN CHECK - CHECK LIST

1.	SHOW A VICINITY MAP WITH THE THOMAS GUIDE PAGE.
2.	SHOW THE NORTH ARROW, SCALE USED, ELEVATION ON THE PLAN AND PROFILE VIEW.
3.	PLANS SHOULD BE WET STAMPED AND SIGNED BY A PROFESSIONAL CIVIL/STRUCTURAL ENGINEER LICENSED TO PRACTICE IN CALIFORNIA.
4.	SHOW THE ALIGNMENT OF THE STORM DRAIN AND/OR CHANNEL AND LABEL THE MAINLINE OF THE FACILITY WITH THE LACFCD OR ARMY CORPS OF ENGINEERS NAME. SHOW STATIONING TICK MARKS AND LABEL STATIONS ALONG CENTERLINE.
5.	SHOW THE DIMENSIONED PROPERTY AND RIGHT-OF-WAY LINES.
6.	LABEL THE STATION OF THE PROPOSED LINE AT THE CONNECTION (CENTERLINE INTERSECTION).
7.	SHOW ALL EXISTING FACILITIES IN DASHED LINE ON THE PLAN AND PROFILE VIEW. SHOW INTERIOR AND EXTERIOR WALLS FOR CHANNELS IN DASHED LINE. SHOW ALL PROPOSED FACILITIES IN SOLID LINE.
8.	CALL OUT THE LACDPW STANDARD PLAN, SPPWC STANDARD PLAN NUMBER, AND/OR ARMY CORPS STANDARD PLAN NUMBER FOR THE CONNECTION METHOD.
9.	SHOW A PROFILE VIEW FROM THE CONNECTION TO THE MOST DOWNSTREAM INLET. IF MAINTAINED BY LACFCD, SHOW PROFILE OF ENTIRE LACFCD MAINTAINED REACH.
A.	LABE THE PIPE LENGTH, SIZE, AND STRENGTH ACROSS THE BOTTOM. SHOW D-LOAD FOR RCP. FOR PVC USE MINIMUM SCHEDULE 80.
B.	LABEL THE MAINTENANCE RESPONSIBILITY ACROSS THE TOP.
C.	SHOW THE ALLOWABLE Q IN CFS ACROSS THE TOP.
D.	SHOW THE HGL. (NOTE: TO LIMIT THE DISCHARGE TO THE ALLOWABLE Q, SIZE THE PROPOSED DRAIN TO ENSURE NO MORE THAN 1' OF AVAILABLE HEAD EXISTS AT THE LOWEST PROPOSED INLET. ANY FLOW IN EXCESS OF THE ALLOWABLE Q MUST BE TEMPORARILY DETAINED ON SITE.)
E.	SHOW INVERT ELEVATION OF THE MAINLINE/CHANNEL AND OF THE PROPOSED PIPE AT THE POINT OF CONNECTION. ALSO, SHOW THE ELEVATION AT THE TOP OF THE GRATE OR INLET. ALSO, SHOW THE INVERT ELEVATION OF THE MAINLINE/CHANNEL PER THE AS-BUILT DRAWINGS IF DATUMS ARE DIFFERENT.
F.	SHOW THE SLOPE OF THE PIPE.
10.	INCLUDE CONCRETE REMOVAL NOTE B ONLY.



③ SIGNATURE

② PLAN
SCALE: 1" = 20'

SAMPLE CONNECTION PERMIT PLAN AND PROFILE VIEW

For more information regarding connections permits, go to www.ladpw.org/des/permit